



Claydon Drive





Claydon Drive

£420,000 freehold

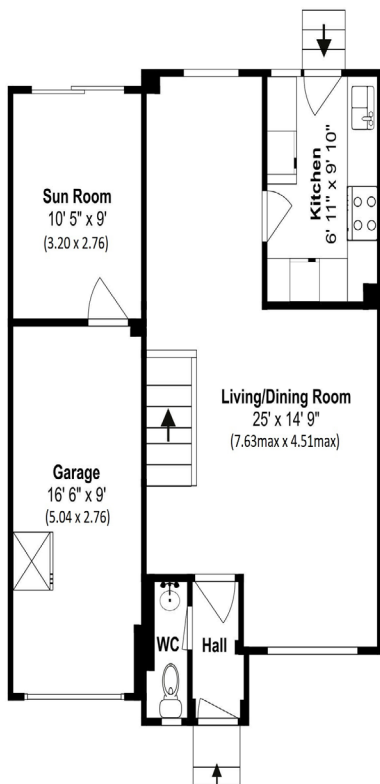
A very well-presented family home in sought after location,
The property offers spacious accommodation throughout
and a beautiful rear garden, and large garage.





This 3-bedroom property offers versatile accommodation throughout, large spacious reception/dining area, Fitted kitchen, good size bedrooms with the master consisting of an En-suite. Well stocked garden with an array of shrubs, potting /sunroom.





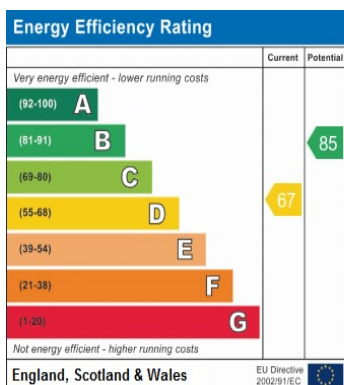
Ground Floor



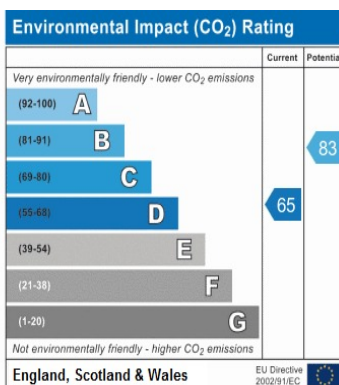
First Floor

Total Square Footage - 994 sqft (approx)
Total Square Metere - 92.0 sqm (approx)

Disclaimer: The floorplans depicted and the stated dimensions in this illustration are indicative only and serve as an approximation of existing structures and features. This illustration is not guaranteed to be accurate or complete. The accuracy of all information should be verified through personal inspection and/or with appropriate professionals.



Reference:



IMPORTANT: Surrey Prime for themselves and for the vendors or lessors of this property whose agents they are give notice that the particulars are produced in good faith and are set out as a general guide only and do not constitute any part of a contract and no person in the employment of Surrey Prime has any authority to make or give any representation or warranty in relation to this property.